

FUTURE PLANS.

Institution of
**MECHANICAL
ENGINEERS**

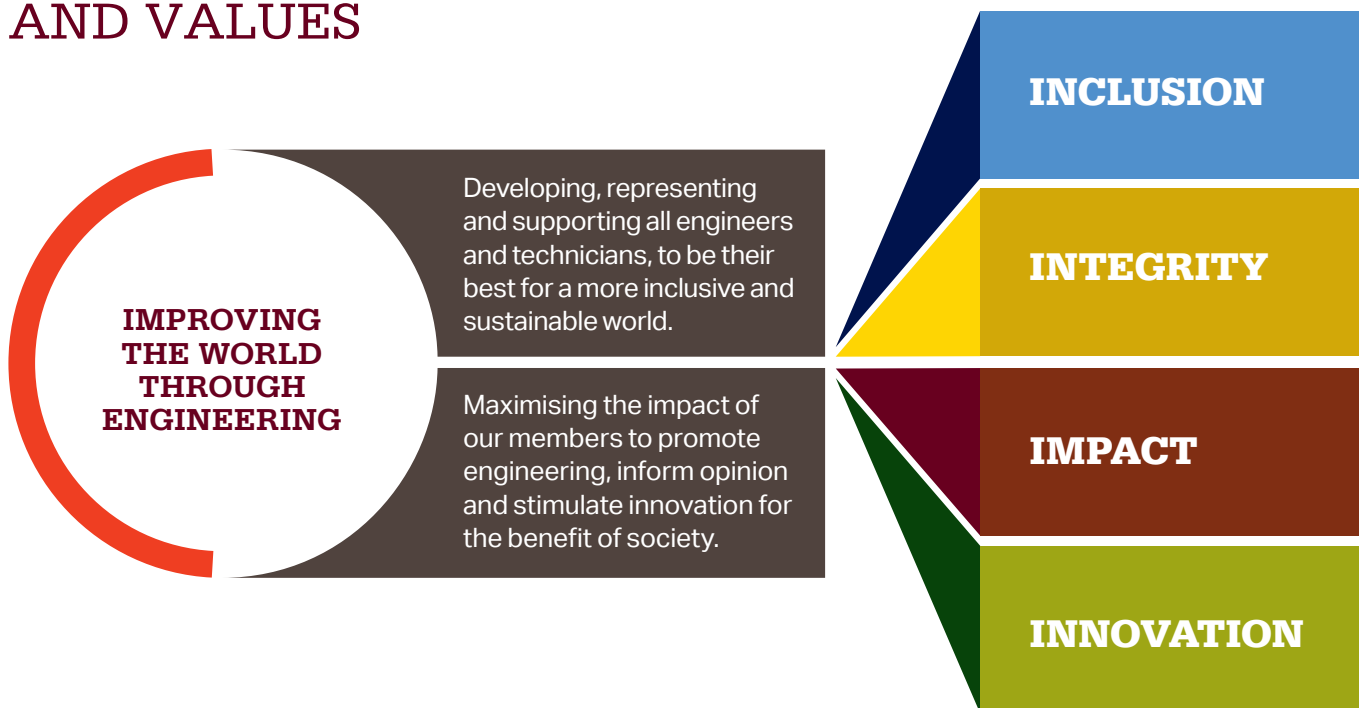


FUTURE PLANS

Strategy

During 2021 the Strategy Committee produced a high level strategy which was reviewed and approved by the Trustee Board for onward consultation with the wider membership. Work continues in 2022 both to consult on, and confirm, the high level strategy, and to develop a more detailed implementation plan to deliver the strategy.

MISSION, STRATEGIC GOALS AND VALUES



STRATEGIC GOALS

Membership

We will develop, represent and support all engineers and technicians, to be at their best for a more inclusive and sustainable world. Our work will:

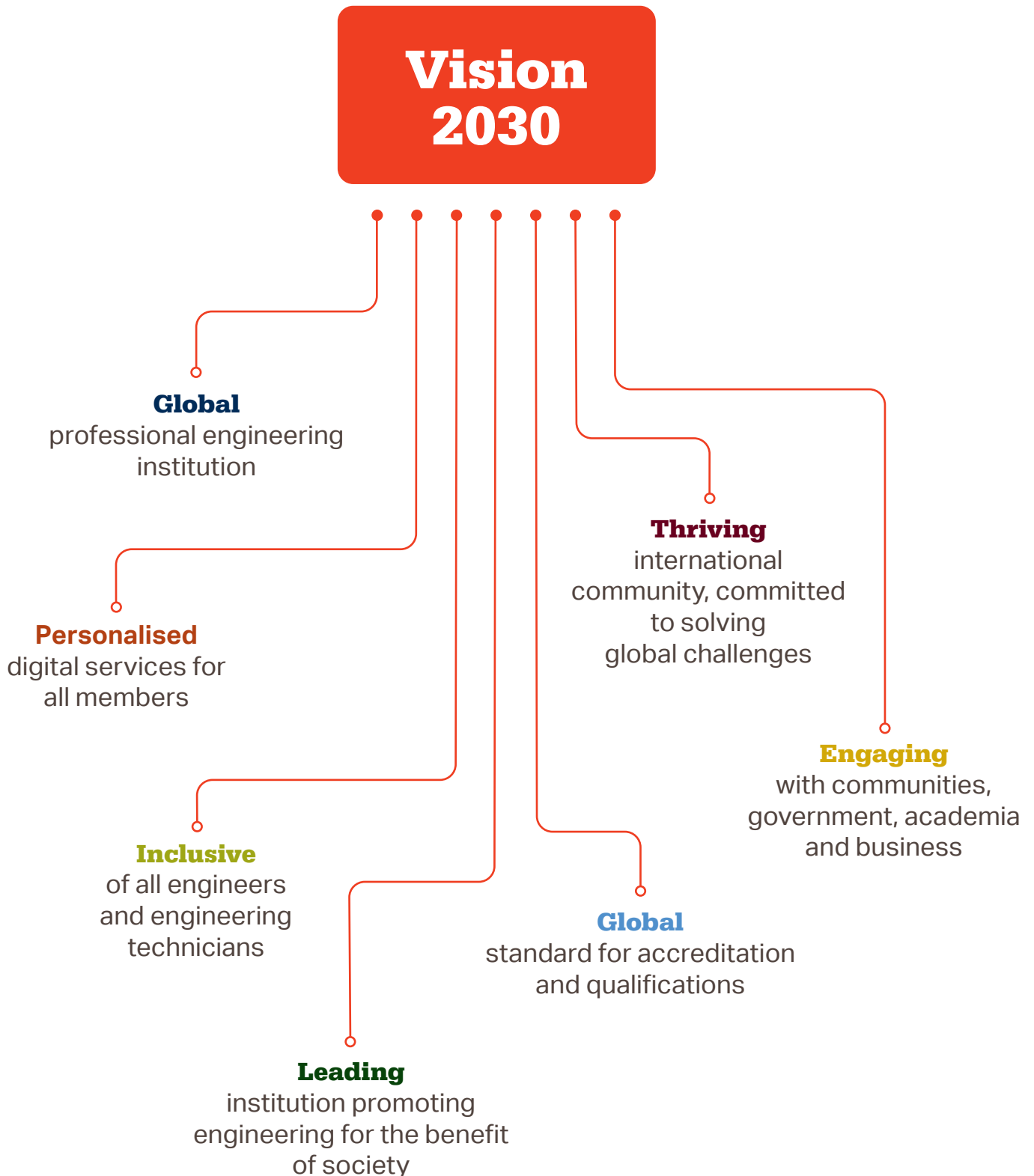
1. Be the global engineering standard for accreditation and qualifications
2. Build a thriving international community of engineers and technicians, engaging through a network of physical and online events
3. Deliver more relevant services, including personalised digital services to all members

Impact

We will maximise the impact of our members in promoting engineering, informing opinion and stimulating innovation for the benefit of society. Our work will:

1. Build a network of international partnerships to promote engineering as a career
2. Shape the public and engineering debate on:
 - a. Climate and Sustainability
 - b. Future Transport
 - c. Infectious Disease Control
 - d. Education
3. Celebrate and encourage innovation and the role of engineering across academia, industry, business and communities

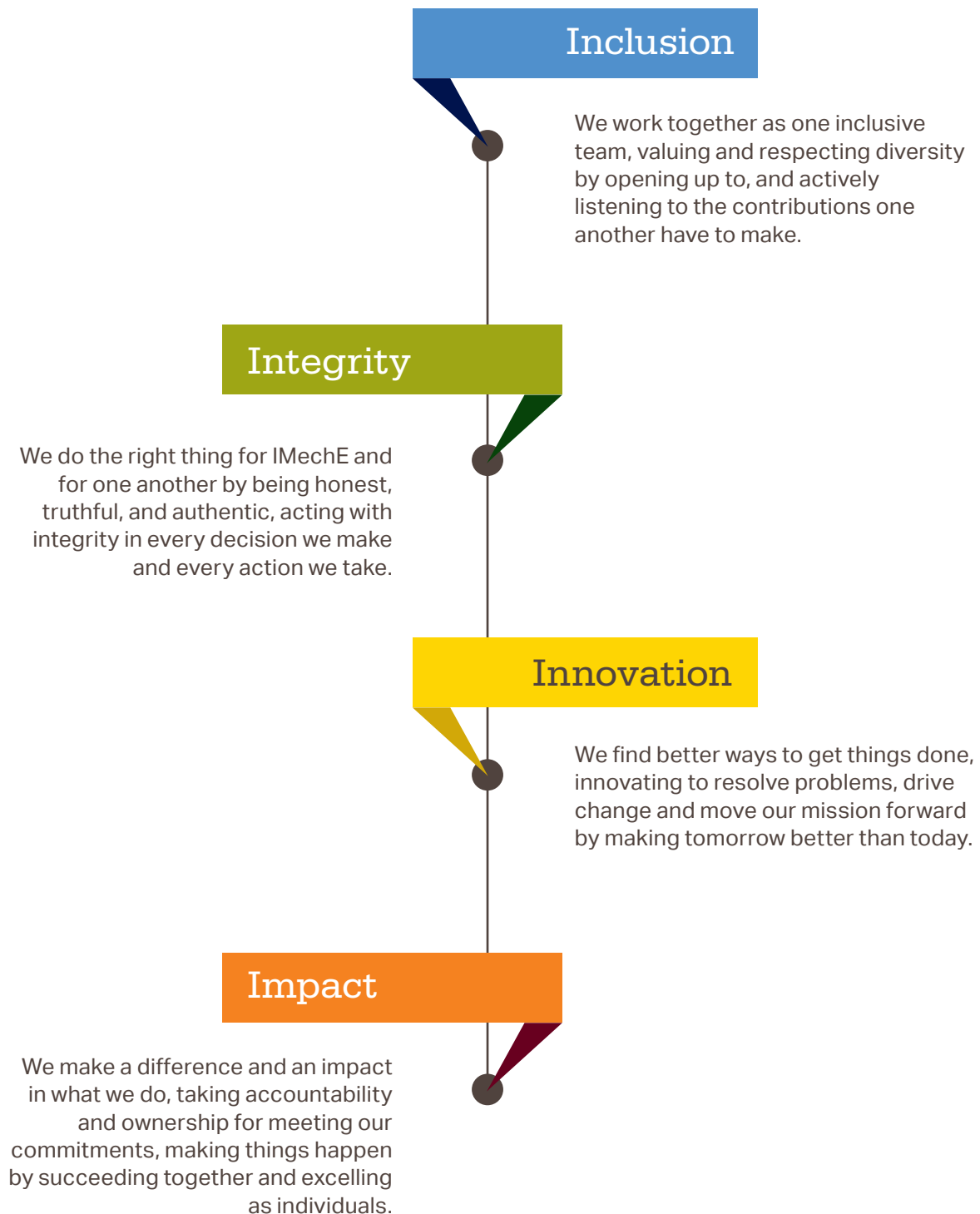
VISION 2030: TO BE A WORLD-LEADING, GLOBAL AND INCLUSIVE ENGINEERING MEMBERSHIP ORGANISATION



STRATEGIC ENABLERS



OUR VALUES



2022 GOALS

KPI 1

Publish 5 year strategy for the Institution that will deliver our mission of improving the world through engineering.

KPI 2

Relaunch IMechE as an End Point Assessment Organisation, supporting apprentices of the future to make their contribution to ensuring a safer and sustainable world.

KPI 3

Develop our complaints procedure to include the new values and behaviours and serious complaints processes and procedures, to strengthen our operations as a diverse and inclusive organisation.

KPI 4

Ensure charity operates a surplus budget at operational level to support our long term financial resilience. Deliver free reserves increase of £250K.

KPI 5

Secure the future of our headquarters through taking a decision on the future of the building via member vote and special meeting.

KPI 6

Deliver improved services to members in an inclusive way through our digital platform modernisation, with projects delivered in line with the Business Plan.

**Institution of
Mechanical Engineers**

1 Birdcage Walk
Westminster
London SW1H 9JJ

T +44 (0)20 7973 1293
F +44 (0)20 7222 8553

media@imeche.org
imeche.org